



Cadiz

Model S-889LS

USER MANUAL

*Please ensure this manual is read and understood
before using the scooter.*

CONTENTS

Introduction	3
Feature Guide	3
Safety Advice	4
Adjustments	4
Tiller angle	
Seat slide	
Seat swivel	
Armrest width	
Armrest angle	
Seat height	
Tiller Controls	6
Speed Controls	
Battery Level Indicator	
Lights Front	
Lights Rear	
Horn	
Thumb Lever Controls	
On/Off Key Switch	
Freewheel Operation	7
Starting To Drive	8
Getting Started	
Moving Off	
Steering	
Reversing	
Transport and Storage	9
Dismantling	
Batteries & Battery Charger	10
Maintenance	11
Lubrication	
Wheels and Tyres	
Trouble Shooting	11
Circuit Breaker	
Fuses	
Check List	
Warranty	12

INTRODUCTION

Congratulations on your purchase of the Invamed Cadiz Scooter. This scooter incorporates comfort and style with the latest in technology. The Cadiz Scooter is easy to use both indoors and out. Direct drive sealed transaxles and electromagnetic brakes give a safe and efficient ride.

The Invamed Cadiz is a class three vehicle and is not legally defined as a motor vehicle, and therefore the user is not required to have a driving licence. The scooter is not subjected to road tax or MOT certificates. Class 3 vehicles can only be used by a person suffering from a physical defect or disability, over 14 years of age. The scooter can be used on roads but not on motorways, cycle tracks or bus lanes. The scooter must be switched down to 6km/h (4mph) when being used on pavements.

Please ensure that you read this manual carefully, it is important for your safety that you understand the guidelines and instructions given.

FEATURE GUIDE (Fig. 1)

- 1 Speed controls.
- 2 Three head lights.
- 3 High/Low speed switch.
- 4 Rear lights and indicators.
- 5 Side reflectors.
- 6 Adjustable width armrests.
- 7 Sliding seat.
- 8 Seat height adjustments.
9. Adjustable angle fold down detachable captain seat with headrest.
10. Foot mat.
11. Tiller angle adjustment.
12. Front bumper.
13. Lightweight basket.
14. Battery charging inlet.
15. Backrest angle adjustment
16. Full suspension.

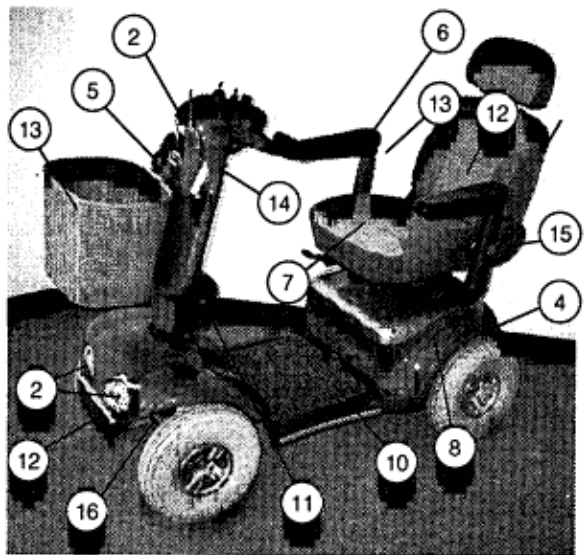


Fig. 1

SAFETY ADVICE

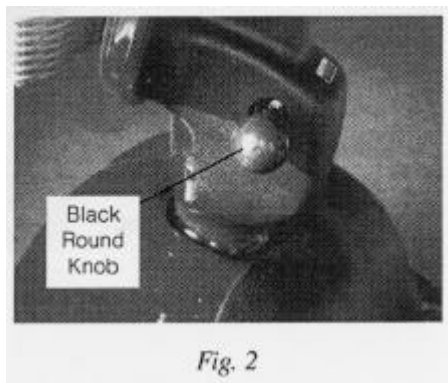
- Do not carry passengers.
- Do not exceed inclines over 8 degrees (14%).
- Do not turn on steep inclines.
- Do not turn suddenly at full speed.
- Do not get on or off the scooter unless the brake is on and the scooter is switched off.
- Do not switch off the scooter when moving in drive.
- Do not use the scooter where you cannot safely or legally walk. Consider yourself as a motorized pedestrian and abide by the rules and regulations of the 1988 road traffic act.
- Do not attempt to climb kerbs over 10 cm (4") in height. Approach kerbs at an angle of 90 degrees at a low speed.
- Do not reverse the scooter unless the speed setting is reduced.
- Do not drink and drive, or use a mobile phone when driving your scooter.
- Do not exceed the user weight limit of 110kg (250lb/ 8st).
- Do not use the scooter if fitted with a canopy in high wind conditions above 61 kph (38 mph).
- Always keep your feet on the scooter when moving.
- Consult your doctor if there is any doubt about your ability to use a scooter.
- Always proceed carefully when travelling over rough or uneven ground.
- Do not exceed the scooters total weight of 150kg (unladen) by adding accessories.
- Do not use the scooter on an unrestricted carriageway unless without a warning beacon being fitted. We do not advise the use on such roads and would suggest an alternative route be used.

Invamed are not responsible for damage or injury incurred due to improper or misuse of their scooters.

ADJUSTMENTS

Tiller Angle Adjustment (Fig. 2)

On the left hand side at the base of the tiller is a black round hand knob. Pull the lever out to release the pin and select the required tiller angle. Refit the pin into one of the five location holes.



Seat Slide adjustment (Fig. 3)

Pulling up on the lever allows the seat position to be adjusted forward or backward. Release the lever and the seat will lock in that position.

Seat Swivel Adjustment (Fig. 3)

Under the right side of the seat there is a spring loaded red lever. Pulling up on the lever allows the seat to swivel, when released the seat will lock into one of 4 positions.

Armrest Width adjustments (Fig. 3)

On the underside of the seat there are two hand knobs, one either side. Releasing the hand knob allows the arms to be adjusted to the required width, or removed for transportation.

Do not use the scooter without the arms being fitted.

Armrest angle adjustment (Fig. 4)

Flip up the armrests to allow access to the adjustment screw and lock nut, unscrew the lock nut and screw the bolt in or out to increase or decrease the angle. Re-tighten the lock-nut.

Your scooter is despatched from the factory with the armrests set parallel to the floor.

Seat Height Adjustments (Fig. 5)

The seat height can be adjusted by inserting the steel locking pin into the required hole.

Backrest angle adjustment (Fig. 6)

Pull up on the release lever spring and set the angle required by holding the backrest in that position and then release the lever, the backrest will stay in the position selected.

The backrest can be lowered onto the seat for storage or transport. Restrain the backrest from going forward when the lever is released.

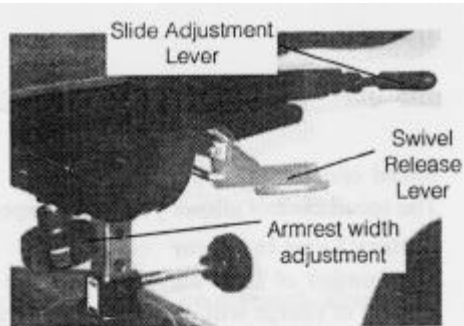


Fig. 3



Fig. 4

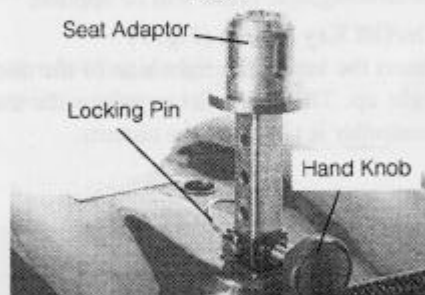


Fig. 5



Fig. 6

SCOOTER TILLER CONTROLS (fig. 7)

Speed control

The speed control allows you to set a speed between 1 (minimum) and 10 (maximum).

Battery Level Indicator

The number of LED bars lit shows the amount of charge left in your batteries. The amount of charge will only show at its true level when the scooter is in drive.

Lights

A blue coloured button at the rear of the tiller head operates the lights.

Horn

A yellow button at the rear of the tiller operates the horn.

Finger Lever Controls

The left finger lever controls the reverse and the right finger lever controls the forward motion. The amount of pressure applied to each lever will determine the speed the scooter travels at. Release the lever and the scooter will slowly come to a stop and the electromagnetic brake will be applied.

On/Off Key Switch (Fig. 7)

Insert the key in the right side of the tiller control. Turn the key and the LED bars will light up. There is a delay before the thumb lever control can be operated, while the controller is checking the circuits.

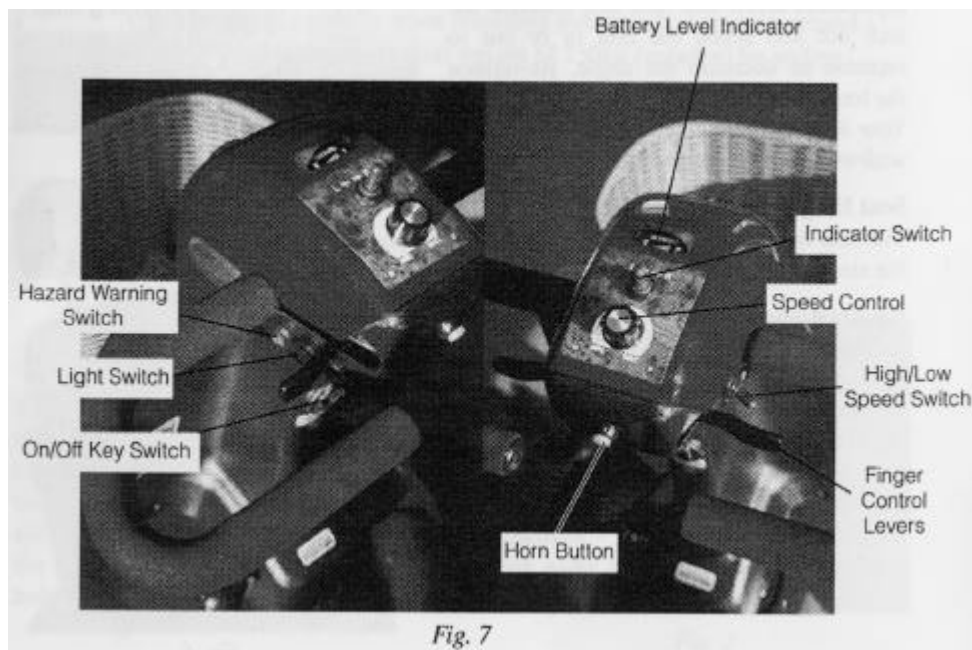


Fig. 7

High Low Speed Switch

Controls speed setting from High to Low. Low setting should be used on pavements and High setting when being used on roads.

Indicator Switch

Operates indicators left or right.

Hazard Warning Switch

Operates all indicator flashers.

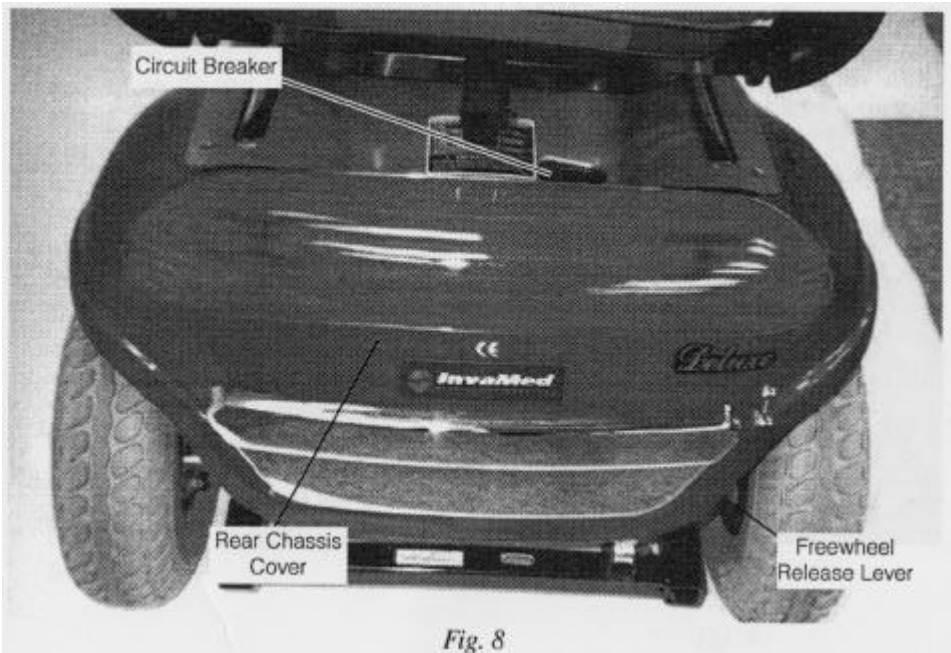
Electromagnetic Brake

The brake is automatically operated when the control levers are released. There is a slight delay when the scooter decelerates, this allows the scooter to come to a smooth stop.

FREE WHEEL OPERATION

The release lever is located inside the right rear wheel below the chassis cover. To disengage the motor push down on the lever (the scooter can now be pushed) to reengage the motor lift up the lever.

***WARNING/Always re-engage the free wheeling device after use.
Failure to do so may result in injury.***



STARTING TO DRIVE YOUR SCOOTER

Getting started

Select a level area with plenty of space. Mount the scooter, either by lifting the arm and sliding on to the seat or rotate the seat outwards and then rotate the seat back to face the tiller. Adjust the tiller and seat as described previously.

Moving Off

Ensure that you are seated in a comfortable position. Turn the key to the on position.

Your speed setting should be on I or 2.

Pull your right hand finger lever, the scooter will move forward slowly. The harder you pull the faster the scooter goes but will only reach the speed level that has been selected.

Release the lever and the scooter will slowly come to a stop and the magnetic brake will be applied.

Steering

Steering the scooter is light and easy. Ensure when starting off you give a wide clearance when turning so that the rear wheels clear any obstacle that you are passing. When steering through limited spaces such as a doorway or when turning around, turn the tiller handles where you want to go and apply power gently. The scooter will turn very tightly, but will still move with complete stability.

Reversing

Before reversing ensure that the area behind is free from any hazards or obstructions. Adjust your speed setting to a low setting before you reverse. Pull the left finger lever, and steer wide of all corners and obstacles.

Dismounting

Before dismounting ensure that the key is turned to the off position

Caution: Please ensure that care is exercised when entering or leaving the scooter and that the tiller is not used for support.

EXTRA GUIDE LINES IN THE CONTROL OF YOUR SCOOTER

Ramps

The stability of your scooter is governed by several factors such as the seating position, the angle of the slope and your height and weight. When approaching an incline, do so directly and not at an angle and where ever possible avoid making turns. When going down a ramp or a slope keep the speed settings to slow. This will ensure there is a safe controlled descent. When the thumb levers are released the scooter will slowly stop.

Do not turn off the control key whilst the unit is in motion.

Please follow the guidelines given previously and your scooter will perform admirably over many surfaces.

Avoid long grass, loose gravel and sand.

DISMANTLING FOR TRANSPORT/STORAGE

The scooters are designed to be dismantled into separate sections for transportation and storage. The heaviest part of the scooter weighs 36kg (80lb). Your scooter can be dismantled into the following sections.

Rear chassis cover.

2 x 34 A/h batteries (weight approx. 12kg each).

Rear drive unit assembly.

Front chassis assembly.

Seat.

DISMANTLING

1. Fold down the back of the seat.
2. Pull up on the red lever under the seat and at the same time lift and twist theseat off.
3. Remove the hand-knob and clip that secures the seat adaptor. Lift the seatadaptor out of the seat post (*Fig. 5*).
4. Remove the rear chassis cover (*Fig. 8*).
5. Disconnect the battery plugs and the orange multi-plug by depressing the small lip on the plugs.
6. Remove the Velcro retaining straps and lift out the batteries.
7. Remove the locking pin and separate the rear drive unit (*Fig. 9*).
8. Lower the tiller to its lowest level on the front chassis.



BATTERIES AND BATTERY CHARGER

The INVAMED CADIZ Scooter is supplied with 2 maintenance free, 34 A/h sealed lead acid batteries. Battery performance can be affected by temperature, terrain and the weight of the user etc. The battery level indicator is only a guide and is most effective when the scooter is moving, only then is the true discharge level displayed. When the scooter stops the battery level indicator may indicate full.

An active user can use up to 30% of battery capacity or more per day. Inactive users may only use 50% of battery capacity in a week.

In both these instances the battery should be put on charge over night.

Battery Charger

Batteries supplied with your scooter are specially designed and require an automatic battery charger. These chargers have an electronic switch that will terminate the charge when the batteries are fully charged.

The battery charger is a 3-amp off board. The charger is able to read the level of charge in the batteries and will switch off when the batteries are fully charged. To charge the batteries connect the plug lead into the battery-charging socket on the scooter and the 3-pin plug into the wall socket and switch on. The battery charger has two lights. The red light when constant shows the battery charger is connected, if the red light flashes there is a break in the connection. The green light flashes when the batteries are receiving charge. The green light is constant when the charge is complete.

Caution: Always ensure that the charging lead is in good condition and has not been damaged or stretched.

MAINTENANCE

Lubrication

At six monthly interval you should lubricate the following parts with a light oil or a similar lubricant.

- Seat pivot post.
- Seat release lever pinion.
- Wheel bearings.
- Axle of scooter.

The transaxle/gear box are sealed units and do not need lubricating. In the event of any difficulties please consult your dealer.

Wheels and Tyres

The wheels of your scooter all have split rims. This allows any punctures to be repaired easily.

To change the wheels remove the centre bolt and slide the wheel off its axle. Ensure that when refitting the wheel the retaining bolt is fitted with a locking washer or the screw threads are treated with lock-tite or a similar adhesive. When changing a tyre the inner tube must be deflated. Remove the four bolts from the wheel and split the rim. Tyre pressure is recommended to be kept at 30 psi on the rear tyres, and 25 psi on the front.

TROUBLE SHOOTING GUIDE

Circuit Breaker (*Fig. 8*)

Your scooter is fitted with the latest in electronic controls that are programmed to protect the electrical system from abnormal overloads. Fitted for extra protection is a circuit breaker, should there be a situation that your scooter stops for no apparent reason please check that the circuit breaker has not popped out. The circuit breaker can be found under the rear chassis cover accessible through a port hole under the seat.

Fuses

Inline 50amp spade fuses from the batteries protect any overload.

Check list

If your scooter fails to operate, please check the following.

- Unit is switched on.
- All plugs and connectors are firmly fixed.
- Battery level shows full charge.
- Freewheeling device is in the drive position.

If the free wheel device has been operated with the scooter left switched on, then the scooter will not operate until the ignition key has been switched off and then on again.

Please consult your dealer if your scooter does not run after checking these points.

WARRANTY

The INVAMED CADIZ Scooter is guaranteed for one year from date of purchase. The warranty is not transferable. The guarantee excludes tyres and all items that have been subject to undue wear and tear or misuse. Changes or modifications undertaken without the written authority of Invamed/RMA will invalidate the warranty

Manual converted to Acrobat format by

Discountscooters
.co.uk Ltd

08000 96 12 96

www.discountscooters.co.uk

email: info@discountscooters.co.uk